

Update History

| REV. | DESCRIPTION | DATE |
|------|-----------------|----------|
| 1.0 | Initial Release | 06/18/14 |

This document shows the change in NC1100L-A software from RP4.213 to 4.214.

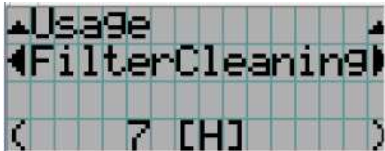
1. Add new feature, “Filter Cleaning Message”

| | | | | |
|-----------|-------------|--------------|--------------|-----|
| CPU FW | CPU DATA | Slv&LD FW | Enigma FW | DCC |
| ↓ | ↓ | | | ↓ |

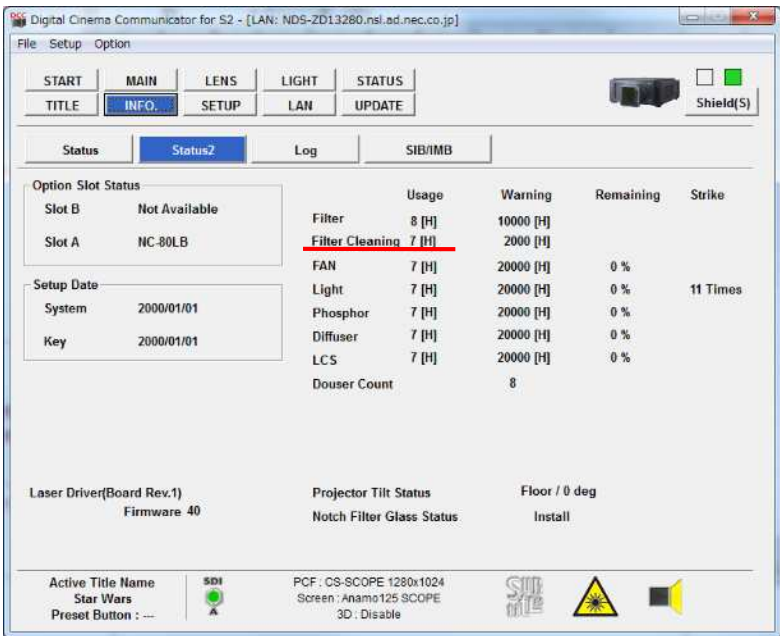
1-1. Count and manage the time after filter cleaning

The time can be shown through:

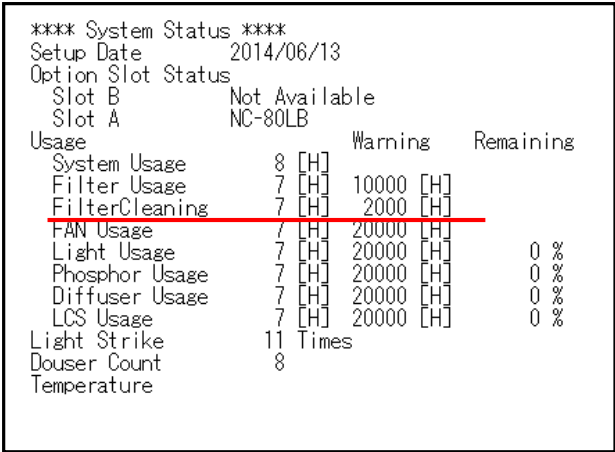
- a. LCD menu-Information-Usage-FilterCleaning



- b. DCC-INFO.-Status2



- c. DCC/USB-Save Information-System Status filed



d. SNMP

vSystemTmFiltercleaning(OID: 1.3.6.1.4.1.119.2.3.123.1.5.11)

| CPU FW | CPU DATA | Sv&LD FW | Enigma FW | DCC |
|--------|----------|----------|-----------|-----|
| ↓ | ↓ | | | ↓ |

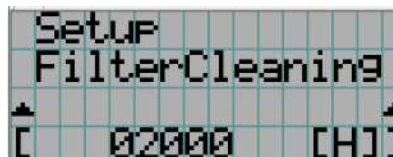
1-2. Filter Cleaning Message

“(217) Filter Cleaning Time”(*) is defined as warning.

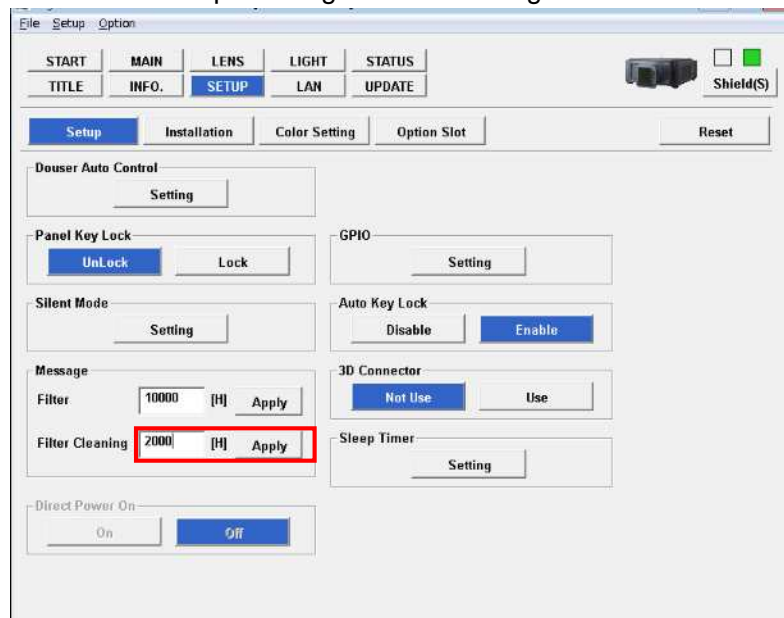
It will be appear when Filter Cleaning Time is over 2,000H(Default).

The default can be changed through

a. LCD menu–Configuration-Setup-Message-FilterCleaning



b. DCC-SETUP-Setup-Message-Filter Cleaning



(*)The current status of warning 217 can be known by SNMP

vErrFilterCleaningTime(OID: 1.3.6.1.4.1.119.2.3.123.1.8.9.217).

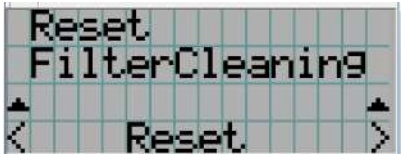
For more detail, refer to the latest “snmp interface for NC series2.doc”.

| | | | | |
|-----------|-------------|--------------|--------------|-----|
| CPU FW | CPU DATA | Slv&LD FW | Enigma FW | DCC |
| ↓ | ↓ | | | ↓ |

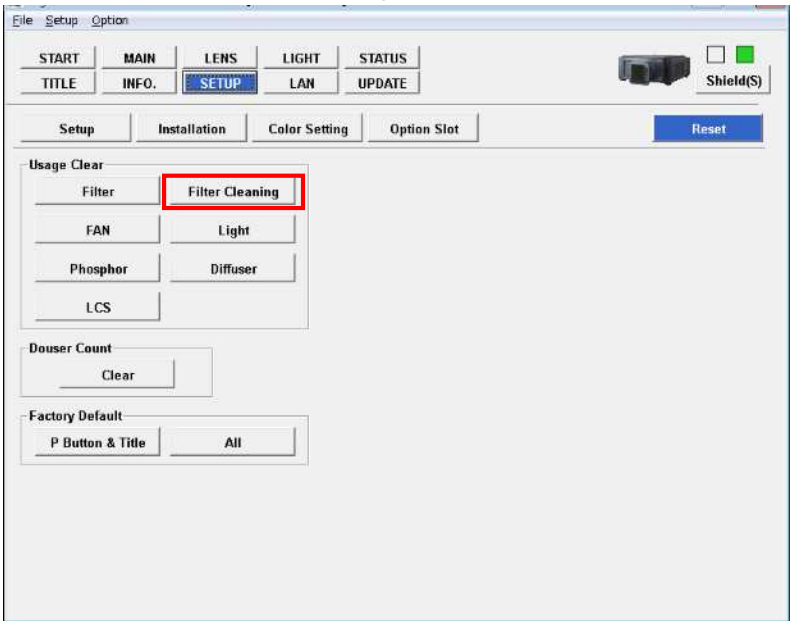
1-3. Reset Filter Cleaning Time

Filter Cleaning Time can be cleared to zero manually when cleaning the filter.
It can be cleared through:

- a. LCD menu–Configuration-Reset-FilterCleaning



- b. DCC-SETUP-Reset-Filter Cleaning



- c. Factory Default -ALL
- d. Reset Filter usage
Filter Cleaning Time is cleared simultaneously when Filter Usage is cleared.

| | | | | |
|-----------|-------------|--------------|--------------|-----|
| CPU FW | CPU DATA | Slv&LD FW | Enigma FW | DCC |
| ↓ | | | | |

2. Support to clear warning 215/217

The changing the current projector mode(*) enables to clear warning 215/217 until next STBY. (It means the 215/217 can be cleared temporally.)

(*)It is available for changing projector mode by using control panel button.

3. Change the default Filter Message Time

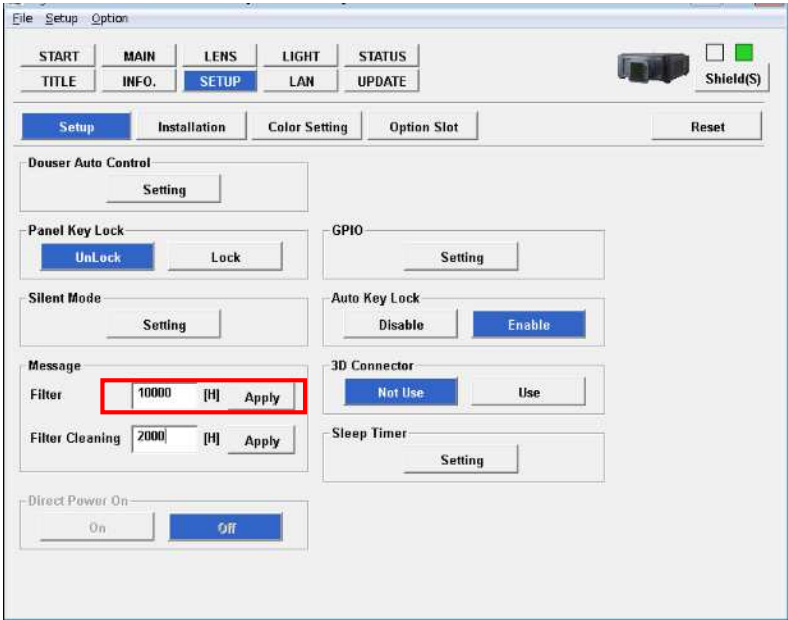
| CPU FW | CPU DATA | Slv&LD FW | Enigma FW | DCC |
|--------|----------|-----------|-----------|-----|
| | ↓ | | | |

The default Filter Message Time is changed from 0H to 10,000H.
0H was set to Filter Message Time in the projector with PR4.1213 or older.
In that case, change manually to 10,000H or proper time.

a. LCD menu-Configuration-Setup-Message-Filter



b. DCC



4. Add STBY usage in Filter Usage

| CPU FW | CPU DATA | Slv&LD FW | Enigma FW | DCC |
|--------|----------|-----------|-----------|-----|
| ↓ | | | | |

| CPU FW | CPU DATA | Slv&LD FW | Enigma FW | DCC |
|--------|----------|-----------|-----------|-----|
| ↓ | | | | ↓ |

5. Support to show real Projector Tilt Status

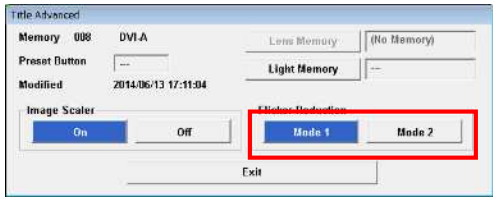
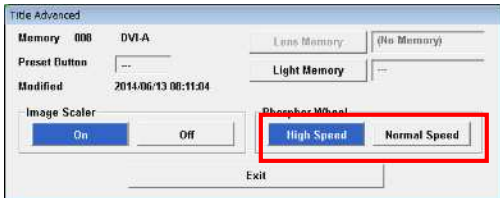
DCC-INFO.-Status2-Projector Tilt Status shows real status of Projector Tilt for both STBY and Power-on.

Also the real status will be applied to slave fan controller if Fan Tilt Setting-Auto is selected.

6. Change the function name

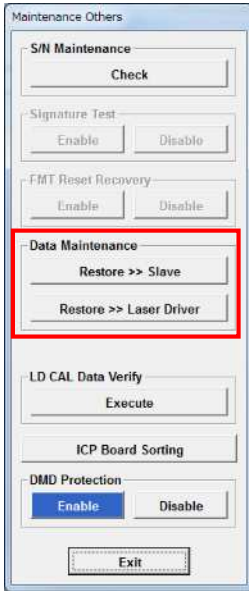
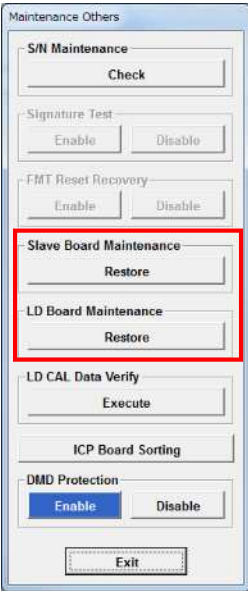
6-1.

| CPU FW | CPU DATA | Slv&LD FW | Enigma FW | DCC |
|--------|----------|-----------|-----------|-----|
| ↓ | | | | ↓ |



6-2.

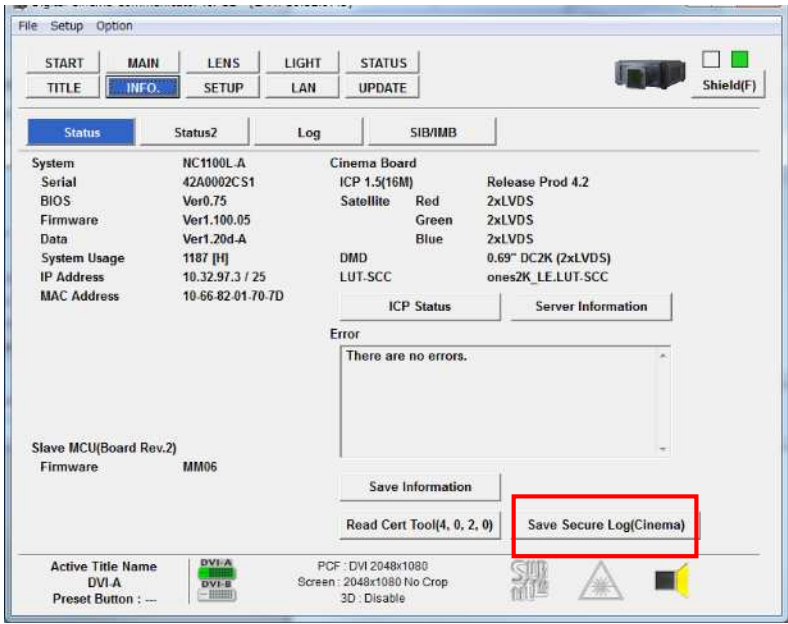
| CPU FW | CPU DATA | Slv&LD FW | Enigma FW | DCC |
|--------|----------|-----------|-----------|-----|
| | | | | ↓ |



7. Add feature to save secure log

All secure log in Enigma can be saved in PC.

| CPU FW | CPU DATA | Slv&LD FW | Enigma FW | DCC |
|--------|----------|-----------|-----------|-----|
| | | | | ↓ |



The last 3 line in log file shows the number of all events, the number of all unread events, oldest unread event, and newest unread event.

```
5186 events, 2609 unread
Oldest unread Event: 2013-03-04T02:26:13+00:00 (Event 2577)
Newest unread Event: 2014-06-18T03:11:49+00:00 (Event 5185)
```

8. **Fixed the issue in security log management**

| CPU FW | CPU DATA | Slv&LD FW | Enigma FW | DCC |
|--------|----------|-----------|-----------|-----|
| | | | ↓ | |

- 8-1. Flash error detection and checksum added for security logs
 - 8-2. Security logs are stored in any free sector as apposed to sequential
- It can be fixed (489) Security Log Warning issue.

9. **Fixed the issue where light power will down in 10 minutes after Service Adj. Mode execution**

| CPU FW | CPU DATA | Slv&LD FW | Enigma FW | DCC |
|--------|----------|-----------|-----------|-----|
| | | ↓ | | |

10. **Fixed the string loss of “Diffuser” in Russian**

| CPU FW | CPU DATA | Slv&LD FW | Enigma FW | DCC |
|--------|----------|-----------|-----------|-----|
| | | | | ↓ |

